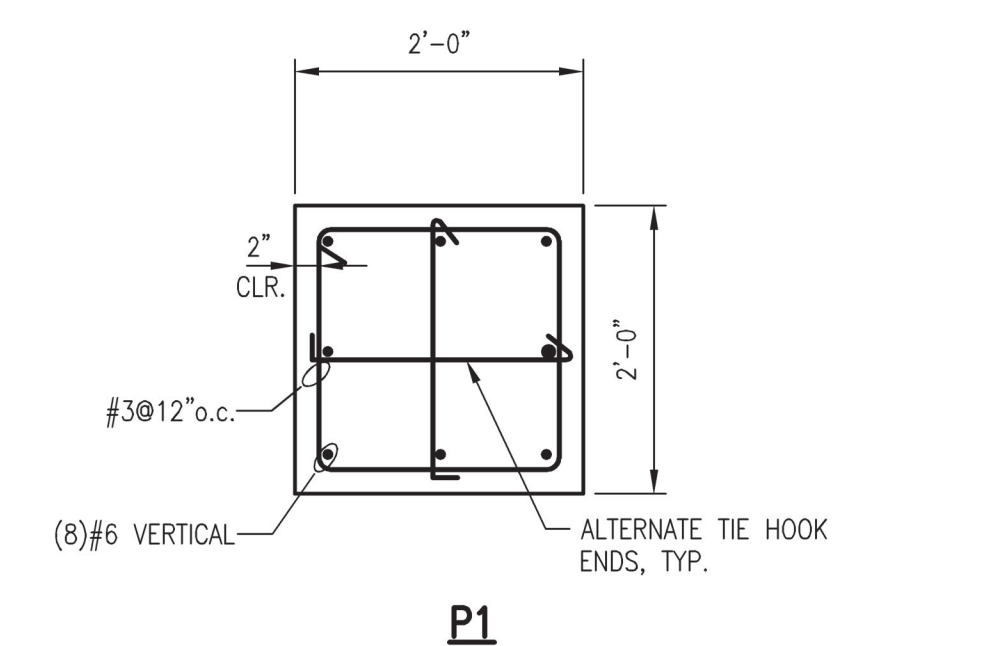
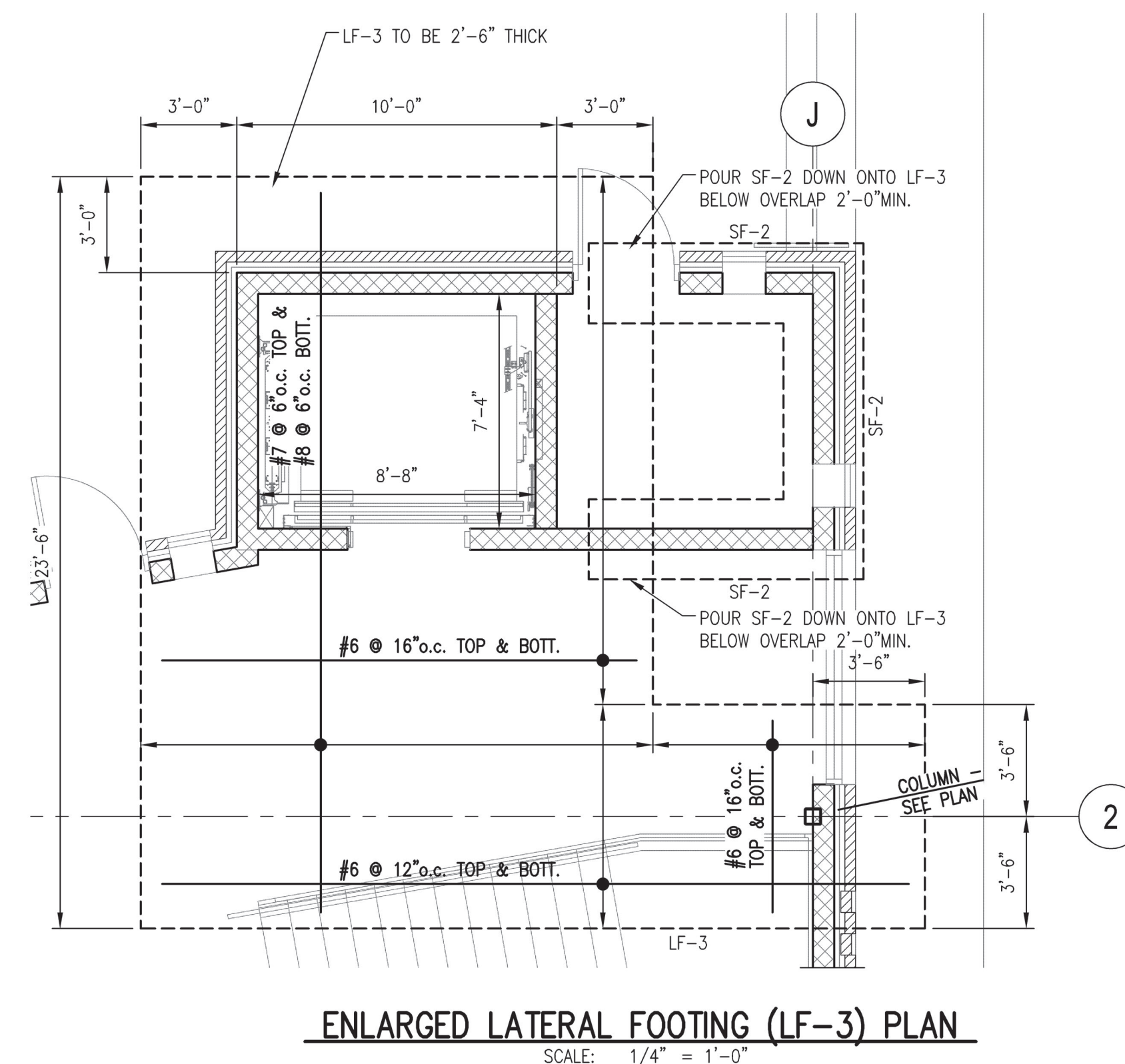
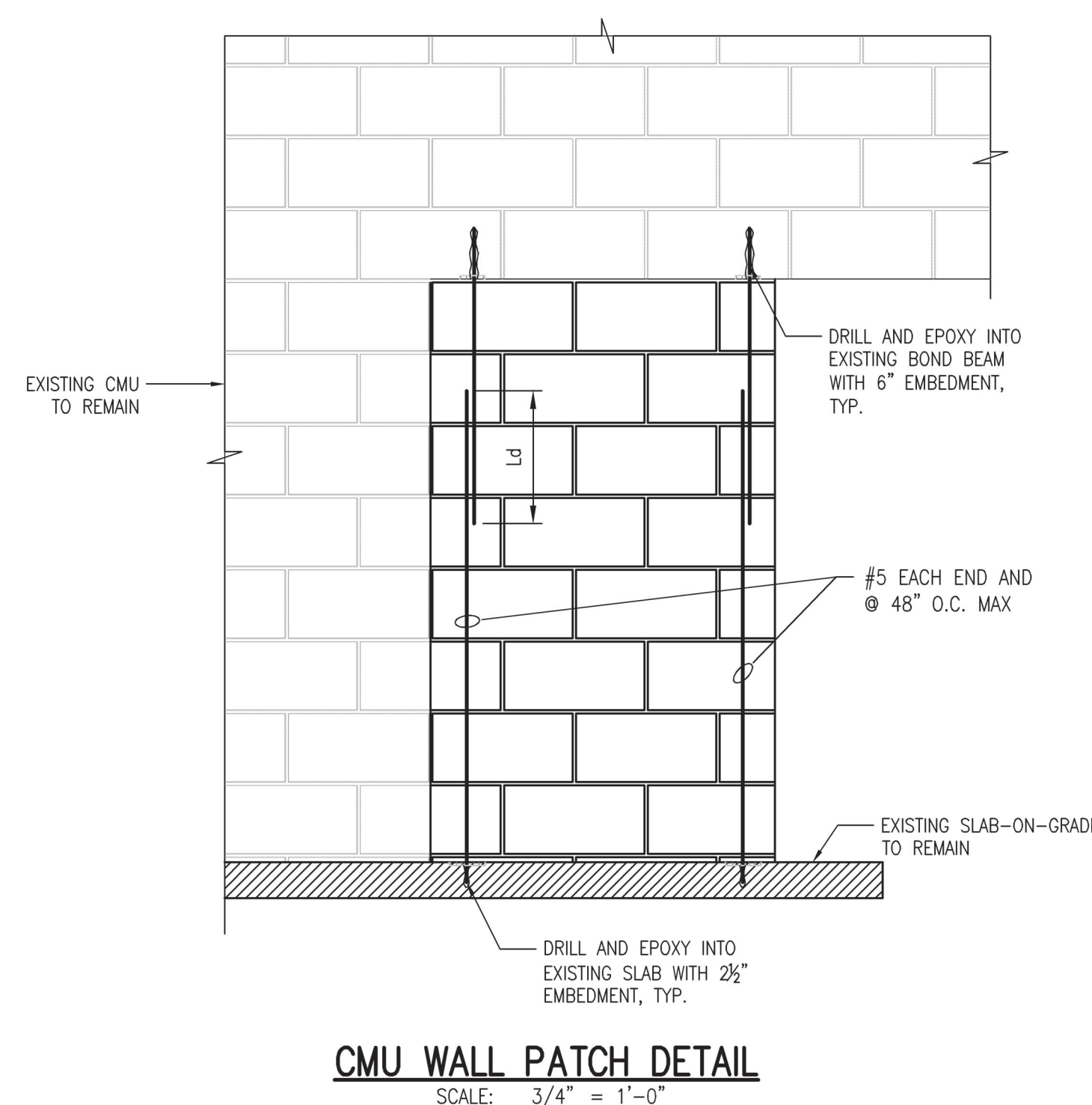
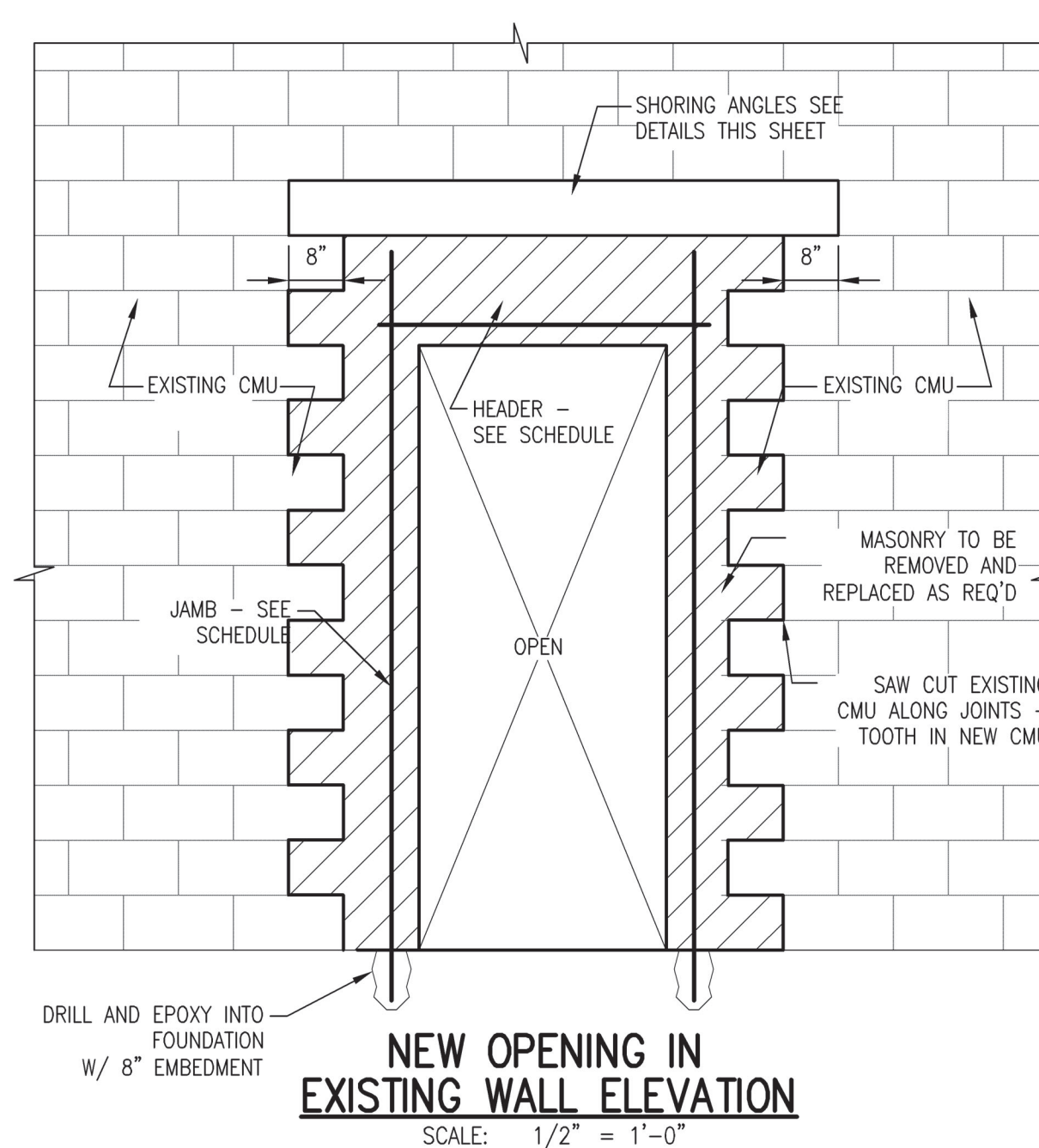
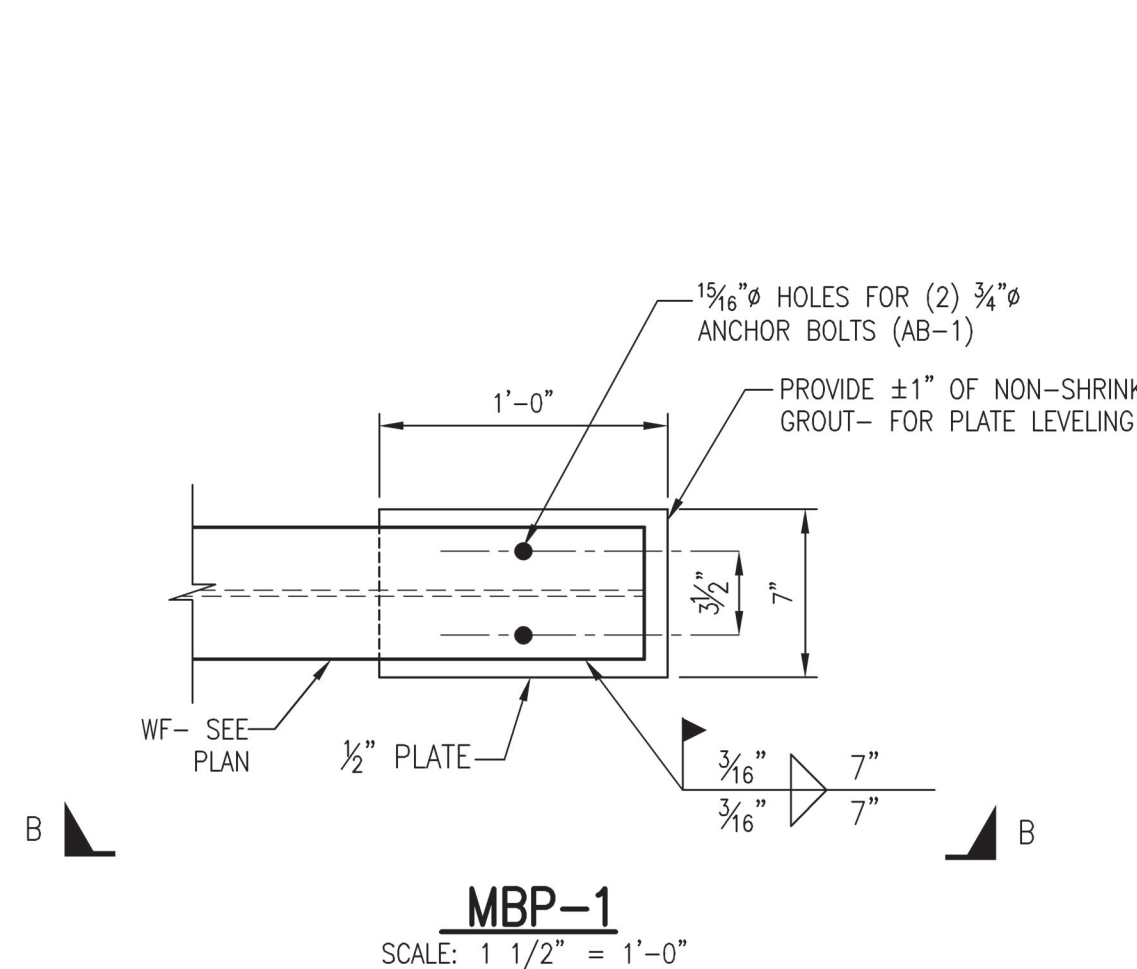


LINTEL SCHEDULE						
MARK	MAX OPENING WITH (FT)	WALL (4) THICKNESS	BOND BEAM REINFORCING	JAMB REINFORCING	# OF COURSES GROUTED ABOVE	REMARK
L1	3'-4"	8" CMU	(1) #5	(1) #5	(1)	DETAIL A-A

MASONRY LINTEL NOTES:

1. 8" BEARING EACH END
2. GROUT ALL JAMBS SOLID
3. INT - INTERIOR WALL
4. IF IN SITU WALL THICKNESS DIFFERS FROM SCHEDULE
PLEASE NOTIFY ENGINEER OF RECORD



PIER DETAIL NOTES:

1. TYPICAL CLEAR CONCRETE COVER TO STIRRUP IS 2" FOR ALL PIERS.
2. CROSS TIES HAVE SAME DIA. & SPACING AS MAIN STIRRUPS U.N.O. ON SCHEDULE. ALTERNATE 90° HOOK EA. CONSECUTIVE CROSS TIE - TYP.
3. ALL STIRRUPS, TIES & VERTICAL REINFORCEMENT TO HAVE SEISMIC HOOKS - TYP.
4. TOP OF FOOTING (START OF PIER) AND TOP OF COLUMN MUST BE COORDINATED W/ THE RELEVANT PLANS.
5. ALL PIERS SHALL BE 4,000psi CONCRETE.
6. TOP OF ALL PIERS= (-0'-8").
7. PIER VERTICALS CAN BE CAST-IN TO FOOTING OR DRILLED AND EPOXIED INTO FOOTING WITH 6" EMBEDMENT